



USER'S MANUAL

TABLE OF CONTENTS

INTRODUCTION.....	3
Alpha Display Console.....	3
Fixed Word Display Consoles	3
SYSTEM OVERVIEW	4
A Partitioned System.....	4
User Codes	4
Fire and Burglary Protection	5
Entry/Exit Delays.....	5
FUNCTIONS OF THE ALPHA CONSOLE.....	6
FIXED WORD DISPLAY CONSOLES System Status Displays.....	7
CHECKING FOR OPEN ZONES.....	8
BYPASSING PROTECTION ZONES.....	9
Forced (Quick) Bypass Feature.....	9
Displaying Bypassed Protection Zones.....	9
ARMING PERIMETER ONLY (STAY/INSTANT)	10
ARMING ALL PROTECTION (AWAY/MAXIMUM).....	11
DISARMING THE SYSTEM AND SILENCING ALARMS	12
CHIME MODE.....	13
DURESS CODE.....	13
KEYPAD INITIATED ALARMS (Panic Keys).....	14
OUTPUT RELAY OPTIONS.....	15
TESTING THE SYSTEM.....	15
TROUBLE CONDITIONS.....	16
FIRE ALARM SYSTEM.....	17
NATIONAL FIRE PROTECTION ASSN. RECOMMENDATIONS.....	18
EMERGENCY EVACUATION.....	19
SUMMARIES OF AUDIBLE NOTIFICATIONS.....	20
PROTECTION ZONES LIST.....	22
QUICK GUIDE TO SYSTEM FUNCTIONS.....	23
CANADIAN DOC STATEMENT.....	25
THE LIMITATIONS OF THIS ALARM SYSTEM.....	26
FCC STATEMENT.....	27
OWNER'S INSURANCE PREMIUM CREDIT REQUEST.....	28
LIMITED WARRANTY.....	31
SERVICING INFORMATION.....	Back Cover

ABOUT THIS MANUAL

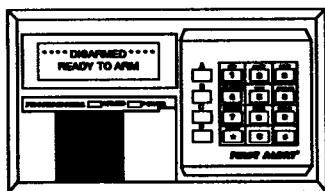
This manual is a step-by-step guide that will acquaint you with the system's features and benefits. It defines the components and their functions, describes their operation, and acquaints you with normal and emergency procedures. The Security System can use either the Alpha Display or Fixed Word Display Consoles to perform and display system functions. Unless stated otherwise, all commands and procedures apply equally to both Consoles. For clarity, only the Alpha console is shown. Refer to the table of fixed word display messages found in the FUNCTIONS OF THE CONSOLE section for system displays used with the fixed word console.

INTRODUCTION

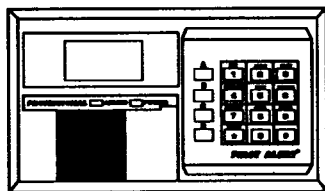
Congratulations on your selection of this Security System. You've made a wise decision in choosing it, for it represents the latest in security protection technology today.

Basically, this system offers you three forms of protection: burglary, fire and emergency. To realize the system's full potential, it is important that you feel comfortable in operating it. Your system consists of at least one Console which provides full control of system operation, various sensors which provide perimeter and interior burglary protection, plus (if installed) a selected number of strategically placed smoke or combustion detectors designed to provide early warning in case of fire.

The system uses microcomputer technology to monitor all protection zones and system status and provides appropriate information for display on the Console(s) used with the system, and initiates appropriate alarms. When programmed to do so, the system can also transmit appropriate alarm or status messages over the phone lines to a central alarm monitoring station.

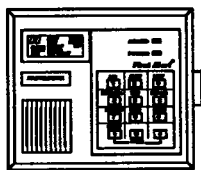


**FA510KP
ALPHA CONSOLE**



**FIXED WORD
DISPLAY CONSOLES**

FA310KP



FA200KP

THE ALPHA DISPLAY CONSOLE (FA510KP) features a multifunction, backlit 12-key digital keypad, and uses a 2-line, 32-character fully programmable alphanumeric Liquid Crystal Display (LCD) which displays the nature and location of all occurrences in friendly English. The console also has a built-in sounder.

THE FIXED WORD DISPLAY CONSOLES are functionally similar to the Alpha Console, except that they are equipped with a fixed-word English language/zone numeric LCD display which displays the nature and location of all occurrences. They also feature a built-in sounder. There are two fixed word consoles available. The FA310KP is similar in style to the alpha console, while the FA200KP features a compact design and does not have backlit keys.

SYSTEM OVERVIEW

A PARTITIONED SYSTEM

This Partitioned System is capable of sharing one physical alarm system between two different users, each with their own requirements (for example, the occupants of a two family house). When so-configured, each partition of the system operates independently of the other, but, from time to time, display messages may appear temporarily on a console which indicate the system's other partition is in use (e.g., during testing by an installer). Do not be concerned, this is normal.

USER CODES

At the time of installation, the installer programs a personal four-digit Master security code, known only to you and yours. A security code must be entered when performing most system functions, including arming and disarming of the system. As an additional safety feature, two additional User security codes can be assigned for use by those not having a need to know the Master code.

QUICK ARMING

Note that if "Quick Arming" was programmed by the installer, the [4] key can be pressed in place of the security code when arming the system. The security code is always required when disarming the system.

To Assign or Delete User Codes:

1. Enter Master code.
2. Press **CODE** [8] key.
3. Enter User Number [3] or [4] to be assigned or deleted.

4. To assign a code, enter desired 4-digit temporary code for that User Number.

To delete a previously entered code, enter nothing during this step.

5. The Console will beep once when the procedure has been completed successfully.

Notes:

- A. Before assigning a User code, be sure it does not conflict with the DURESS code (see *DURESS CODE* section).
- B. For greater security, avoid obvious codes such as 1111 or 1234.
- C. The Master code remains in effect even when a User code has been assigned.
- D. Users to whom codes have been assigned should not be shown how to bypass protection points (as explained later) unless they have a need to know.

To Change Master Code:

Each partition's four-digit master code can be used to reprogram itself, via that partition's console.

1. Enter Existing Master Code.
2. Press **CODE** [8] key.
3. Press [2] key.
4. Enter New Master Code.
5. Enter New Master Code *again*.

If the new code has been successfully entered, the console will beep three times. Otherwise, a single beep will be heard and the earlier Master Code remains in effect. If necessary, repeat steps 1-5.

FIRE & BURGLARY PROTECTION

One or more sensing devices will have been assigned by the installer of your alarm system to each of the various protection zones in your system (although not every zone may have been used). For example, the sensing device on your Entry/Exit door may have been assigned to zone 01, sensing devices on windows in the master bedroom to zone 02, and so on. These numbers will appear on the display for that zone (if programmed), when the respective zone is faulted.

*The fire protection portion of your security system (if used) is always on and will sound an alarm if a fire condition is detected. Refer to the **FIRE ALARM SYSTEM** section for important information concerning fire protection, smoke detectors and planning emergency exit routes from your house.*

The burglary protection portion of your system must be armed before it will sense burglary alarm conditions. When an alarm occurs, both the console and external sounders will sound, and a message in the Display Window will identify the zone(s) causing the alarm. In addition, if your system is connected to a central monitoring station, an alarm report will be sent. Disarming the system will stop alarm sounding. Your system provides four modes of burglary protection: STAY, AWAY, INSTANT and MAXIMUM, and even allows you to BYPASS selected zones of protection while leaving the rest of the system armed. The system also provides a CHIME mode, for alerting users to the opening and closing of doors and windows while the system is disarmed. Refer to the other sections of this manual for procedures for using these features.

ENTRY/EXIT DELAYS

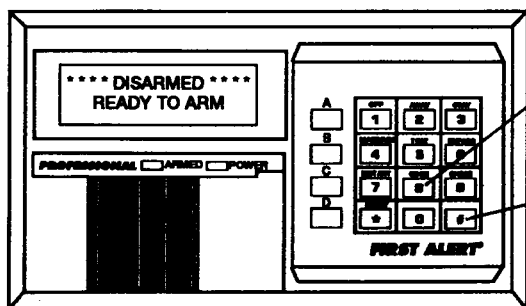
Your system is programmed by the installer with preset time delays, which allow you to leave and reenter through the entry/exit delay door without setting off an alarm. When you enter, the system must be disarmed during the entry delay period or an alarm will occur. The console will beep slowly during the entry delay period to remind you to disarm the system.

The entry delay feature can be turned off for greater security when you are sleeping or while you are away for extended periods of time (INSTANT & MAXIMUM modes, described later).

See your installer for your delay times and record them here:

Exit Delay : seconds

Entry Delay : seconds

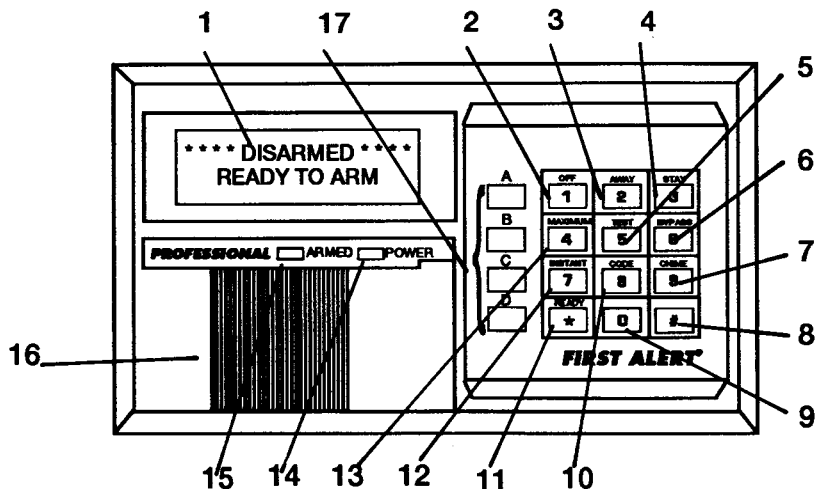


CODE [8] KEY
FOR ASSIGNING
TEMPORARY
CODES

QUICK ARM
KEY [#]
(IF PROGRAMMED)

FUNCTIONS OF THE ALPHA CONSOLE

1. **ALPHA DISPLAY WINDOW:** A 2-line, 32-character Liquid Crystal Display (LCD). Displays protection point identification and system status messages. See the *FIXED WORD DISPLAY CONSOLE* table for Fixed Word Display messages and their meanings.
2. **OFF KEY:** Disarms the burglary portion of the system, silences alarms and audible trouble indicators, and clears visual alarm trouble after the problem has been corrected.
3. **AWAY KEY:** Completely arms both perimeter and interior burglary protection for backup protection by sensing an intruder's movements through protected interior areas as well as guarding doors, windows, etc. Arrivals can enter through an entry delay zone without causing an alarm if the system is disarmed before the entry delay time expires.
4. **STAY KEY:** Arms the perimeter burglary protection, guarding doors, windows and other perimeter protection points, and sounds an alarm if one is opened. Interior protection is not armed, which allows movement within the premises without causing an alarm. Arrivals can enter through an entry delay zone without causing an alarm if the system is disarmed before the entry delay time expires.
5. **TEST KEY:** Tests the system and alarm sounder if disarmed. Refer to the *TESTING THE SYSTEM* section for test procedures.
6. **BYPASS KEY:** Removes individual protection zones from being monitored by the system. Displays previously bypassed protection zones.
7. **CHIME KEY:** Turns the CHIME mode on and off. When on, any entry through a delay or perimeter zone while the system is disarmed will cause a tone to sound at the Console(s).
8. **[#] KEY:** Permits ARMING of the system without use of a security code ("Quick Arm") if programmed to do so.
9. **KEYS 0-9:** Used to enter your individual security access code(s).
10. **CODE KEY:** Allows the entry of additional user codes that can be given to other users of the system.
11. **[*] READY KEY:** When depressed prior to arming the system, the console will display all open protection zones.
12. **INSTANT KEY:** Arms in manner similar to STAY mode, but turns off the entry delay period, offering greater security while inside and not expecting any late arrivals. An alarm will occur immediately upon opening any perimeter protection point, including entry delay zones.
13. **MAXIMUM KEY:** Arms in manner similar to AWAY mode, but eliminates the entry delay period, thus providing maximum protection. An alarm will occur immediately upon opening any protection point, including entry delay zones.
14. **POWER INDICATOR: (GREEN)** Lit when primary AC power is on. If off, and AC LOSS is displayed, system is still operating, but on its backup battery power. See POWER FAILURE in *TROUBLE INDICATIONS* section.
15. **ARMED INDICATOR: (RED)** Lit when the system has been armed (STAY, AWAY, INSTANT or MAXIMUM).
16. **INTERNAL SOUNDER:** Mimics the alarm sounder during alarms, and will also 'beep' during certain system functions, such as during entry delay time, during CHIME mode, and to acknowledge key-press when arming and disarming the system (see *SUMMARY OF AUDIBLE NOTIFICATION*).
17. **PANIC KEYS:** See PANIC section for description of A, B, C keys (D key is not used in this system).



ALPHA CONSOLE
(FA510KP)

FIXED WORD DISPLAY CONSOLE System Status Displays

AWAY	All burglary zones, interior & perimeter, are armed.
STAY	Perimeter burglary zones, such as windows & doors, are armed.
INSTANT	Entry delay is turned off.
BYPASS	One or more burglary protection zones have been bypassed.
NOT READY	Appears when burglary portion of the system is not ready for arming (due to open protection zones).
READY	The burglary portion of the system is ready to be armed.
NO AC	Appears if AC power has been cut off (backup battery still on).
AC	Appears when AC power is present.
CHIME	Appears when the CHIME feature is activated.
BAT	Low battery condition (w/zone No. = wireless transmitter)
ALARM	Appears when an intrusion has been detected and the system is armed (also appears during a Fire alarm). Accompanied by the protection zone ID in alarm.
CHECK	Appears when a malfunction is discovered in the system at any time or if a fault is detected in a FIRE zone at any time or in a DAY (Trouble)/NIGHT (Alarm) burglary zone during a disarmed period. Accompanied by a display of zone number in trouble.
FIRE	Appears when a fire alarm is present. Accompanied by a display of the zone in alarm.

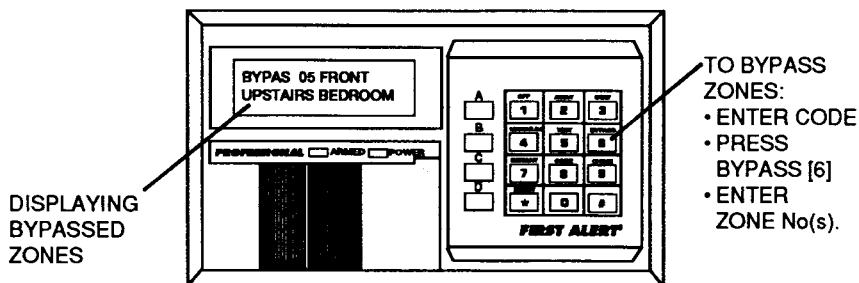
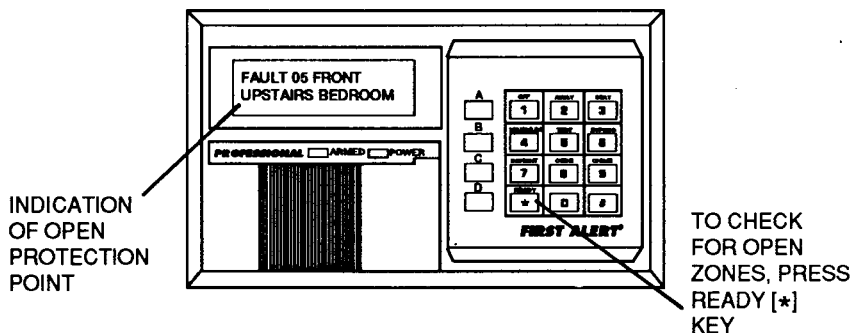
IMPORTANT!: When using the keypad to enter codes and commands, sequential key depressions must be made within 2 seconds of one another. If 2 seconds elapses without a key depression, the entry is aborted and must be repeated from its beginning.

CHECKING FOR OPEN ZONES

BEFORE ARMING YOUR SYSTEM, ALL PROTECTED DOORS, WINDOWS AND OTHER PROTECTION ZONES MUST BE CLOSED (OR BYPASSED).

PROCEDURE

1. If the Not Ready message is displayed prior to arming, check for open zones by depressing and releasing the **READY [*]** key (do not enter code first).
2. All open protection points will be displayed. These points must be either closed or bypassed (see *BYPASSING PROTECTION ZONES* section) before the system can be armed. The Ready message will be displayed when all protection zones have been either closed or bypassed.



BYPASSING PROTECTION ZONES

(USED FOR ARMING SYSTEM WITH ONE OR MORE ZONES SELECTIVELY UNPROTECTED)

PROCEDURE

1. System must be disarmed first. Enter security code.
2. Press **BYPASS** [6] and enter zone number(s) of zones to be bypassed. Enter as two digits if less than 10 (e.g., 01, 02, 03, etc.).
3. When finished entering all zone numbers to be bypassed, wait for bypassed zones to be sequentially displayed (accompanied by a beep for each) before proceeding with arming.
4. The Bypass message will be displayed indicating the presence of one or more bypassed zones.
5. Arm the system as usual.

Notes: *Bypassed zones are unprotected and will not cause an alarm when violated while system is armed.*

Bypasses are removed when an OFF sequence (security code plus OFF) is performed.

FORCED (QUICK) BYPASS FEATURE

Automatically bypasses zones, as checked below by your installer, without having to enter each zone number individually:

- ☐ All open (faulted) zones
- ☐ All open (faulted) zones, plus these zones, as checked:
- ☐ 17, ☐ 30, ☐ 31, ☐ 46, ☐ 47

1. Enter the security code.
2. Press the BYPASS [6] key.
3. After 3 seconds the system will bypass and sequentially display all faulted zones (and others, if indicated above). Then continue with step 4 of normal procedure.

DISPLAYING BYPASSED ZONES

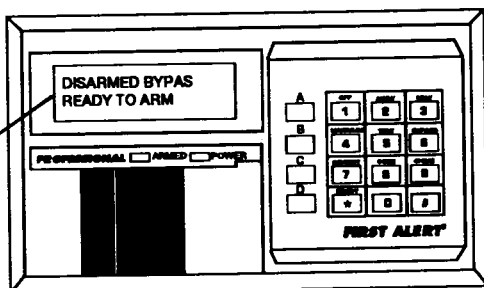
(For determining what zones have been previously bypassed)

1. Enter security code and press **BY-PASS** [6].
2. Wait for all bypassed zones to be sequentially displayed.

LIMITATION

- Fire zones cannot be bypassed.

SYSTEM
CAN NOW
BE ARMED
WITH
ZONE (S)
BYPASSED



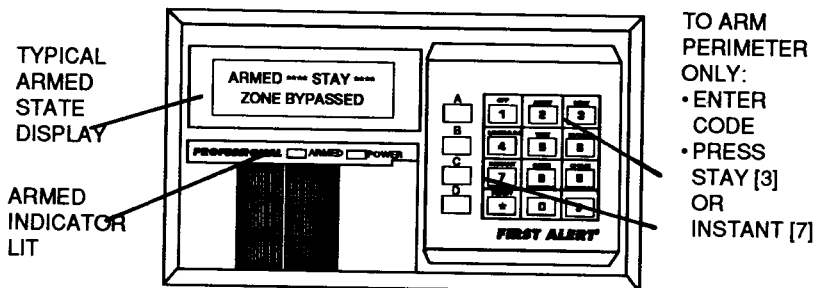
ARMING PERIMETER ONLY

STAY: STAYING HOME, EXPECTING LATE ARRIVALS

INSTANT: STAYING HOME, NO LATE ARRIVALS EXPECTED

PROCEDURE

1. Enter the security code when the Ready message is displayed.
Note: If the Ready message is not on because an interior zone is faulted, arming Stay or Instant will disregard this condition.
2. Press the **STAY** [3] or **INSTANT** [7] key, depending on arming mode desired.
3. The armed state message will be displayed, accompanied by three beeps from the Console. "Exit" delay begins.



"STAY" KEY RESULT

Arms entry/exit delay door after exit delay ends, and other sensors guarding perimeter doors and windows immediately.

Late arrivals can enter through the entry /exit delay zone door and disarm the system within the entry delay period without causing an alarm. See *ENTRY/EXIT DELAYS* section. An alarm will occur instantly when any other exterior protection point is violated. Interior protection points remain disarmed to permit freedom of movement throughout the interior.

"INSTANT" KEY RESULT

Arms entry/exit delay door after exit delay ends, and other sensors guarding perimeter doors and windows immediately.

Subsequently, an alarm will occur *instantly* when any exterior protection point is violated, *including the entry delay zone door*. Interior protection points remain disarmed to permit freedom of movement throughout the interior.

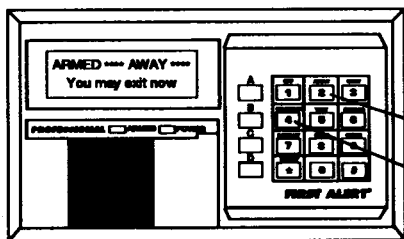
ARMING ALL PROTECTION

A W A Y: NO ONE STAYING HOME

M A X I M U M: NO ONE STAYING HOME, MAXIMUM SECURITY

PROCEDURE

1. Enter the security code when the Ready message is displayed.
2. Press the **AWAY** [2] or **MAXIMUM** [4] key, depending on arming mode desired.
3. The armed state message will be displayed, accompanied by two beeps from the Console. "Exit" delay begins.



TO ARM
ALL PROTECTION:
• ENTER CODE
• PRESS
AWAY [2]
OR
MAXIMUM [4]

"AWAY" KEY RESULT

Arms entry/exit delay door and interior zones after exit delay ends, and all other sensors immediately.

You may exit through the entry/exit delay door during the exit delay period and subsequently reenter through that door (and disarm the system within the entry delay period) without causing an alarm. See *ENTRY/EXIT DELAYS* section. An alarm will occur instantly when any other exterior or any interior protection point is violated.

"MAXIMUM" KEY RESULT

Arms entry/exit delay door and interior zones after exit delay ends, and all other sensors immediately.

You may exit through the entry/exit delay door during the exit delay period without causing an alarm. Subsequently, an alarm will occur *instantly* when *any* protection point is violated, *including the entry delay zone door*.

This mode is suggested when the premises will be vacant for extended periods of time such as vacations, etc., or when retiring for the night and no one will be moving through protected interior areas.

SPECIAL "AWAY" ARMING

In a two partition system, if the same Master Code is in effect for both partitions (see Page 4) *both* partitions can be armed **AWAY** at the same time from either partition's console.

Both partitions must be Ready to Arm.

1. Enter: Master Code + [AWAY] + [2]
2. Two beeps will be heard as both partitions arm (with exit delay).

If the local partition (at which arming is attempted) is not Ready to Arm, one beep will be heard after [AWAY] is entered and neither partition will arm.

If the remote (other) partition is not Ready to Arm, two beeps will be heard after [AWAY] is entered and a single beep will be heard after [2] is entered and neither partition will arm.

THIS PROCEDURE IS NOT APPLICABLE TO "DISARM", OR ANY OTHER FUNCTION.

DISARMING THE SYSTEM AND SILENCING ALARMS

(FOR AWAY, STAY, INSTANT, AND MAXIMUM ARMING)

NORMAL DISARMING PROCEDURE

Enter security code and press **OFF** [1]. The Ready message will be displayed (if all sensors are closed) and the console will beep once to confirm that the system is disarmed, unless an alarm has occurred.

IMPORTANT!

If you return and the main burglary alarm sounder is on, DO NOT enter the premises, but call the police from a nearby safe location.

If you return after an alarm has occurred and the main sounder has shut itself off, the console will beep rapidly as soon as you enter through the delay zone, to alert you. If this occurs, leave immediately and contact the police from a nearby safe location.

ALARM MEMORY

When an alarm occurs, the console display will indicate the number(s) of the zone(s) that were violated, and will display the type of alarm (e.g., **ALARM** for Burglary and **FIRE AND ALARM** for Fire). The console will also beep rapidly during entry through the delay zone.

The alarm display will remain on until the security code plus **OFF** [1] key sequence is entered a second time.

SILENCING ALARMS

Burglary alarm sounders will be silenced when security code plus **OFF** is entered.

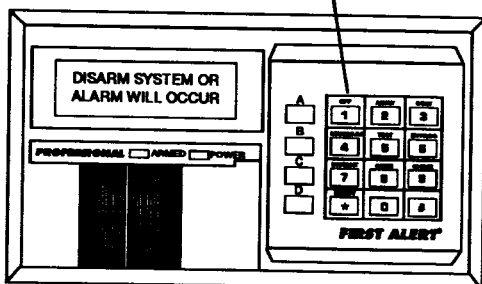
Fire alarm sounders can be silenced by just pressing the **OFF** [1] key. No code entry is required. The alarm remains in memory, however, until your security code plus **OFF** [1] key sequence is entered.

See **SUMMARY OF AUDIBLE NOTIFICATION** section for information which will enable you to distinguish between **FIRE** and **BURGLARY** alarm sounds.

TO DISARM SYSTEM

• ENTER
SECURITY
CODE

• THEN
PRESS
OFF



CHIME MODE

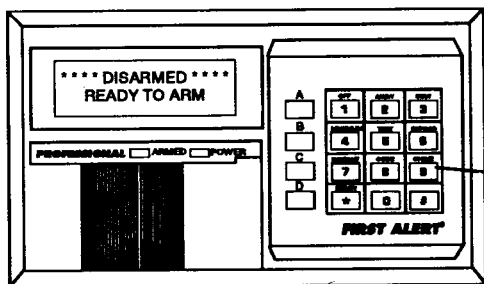
(THIS FEATURE IS FUNCTIONAL ONLY WHEN THE BURGLARY SYSTEM IS DISARMED)

Your system can be set to alert you to the opening of a door or window while it is disarmed by using CHIME mode. When activated, three tones will sound at the Console whenever a door or window is opened, and the Not Ready message will be displayed. Pressing the **READY [*]** key will display the open protection points.

Note that Chime mode can be activated only when the system is Disarmed.

To turn Chime Mode on, enter the security code and press the **CHIME [9]** key. The CHIME message will appear.

To turn Chime Mode off, enter the security code and press the **CHIME [9]** key again. The CHIME message will disappear.



TO TURN
CHIME MODE
ON/OFF
• ENTER CODE
• PRESS
CHIME [9]

DURESS CODE

(WHEN FORCED TO DISARM/ARM UNDER THREAT)

Duress can be used during a holdup, when you are ordered to either arm or disarm the system. When used, the system performs the ordered action and transmits a silent alarm to the central station. A duress alarm is activated by increasing the 4th digit of the security code by 1.

For example, if the Normal security code is "1 2 3 4", the Duress security code is "1 2 3 5".

IMPORTANT

- This code is useful only when connected to a central station.
- Duress code capability is not present for codes ending in 9.
- All users of codes must be instructed to enter their codes carefully to avoid the possibility of accidentally entering the Duress code.

KEYPAD INITIATED ALARMS (Panic Keys)

(FOR MANUALLY ACTIVATING SILENT AND/OR AUDIBLE ALARMS)

There are three lettered keys or combinations of paired keys on your console that are installer programmable for emergency (panic) functions. In the table below, your installer will indicate the functions that have been programmed for the emergency keys on the consoles used in your system.

Typical emergency functions that might be programmed are: Silent, Audible, Personal, and Fire.

If programmed for silent emergency by your installer, and the system is connected to a central alarm monitoring station, the control will send a silent alarm signal to the central station, but there will be no audible alarms or visual displays.

If programmed for audible emergency by your installer, a loud, steady alarm will sound at your console *and* at any external sounders that may be connected (ALARM plus a description would also be displayed).

A personal emergency alarm will notify the central station (if connected) and will sound at Consoles, but not at external bells or sirens.

A fire alarm will send a fire alarm message to the central station and will uniquely sound external bells and sirens (FIRE plus a description would also be displayed).

To initiate a Panic function *at any time of day or night*, simply:

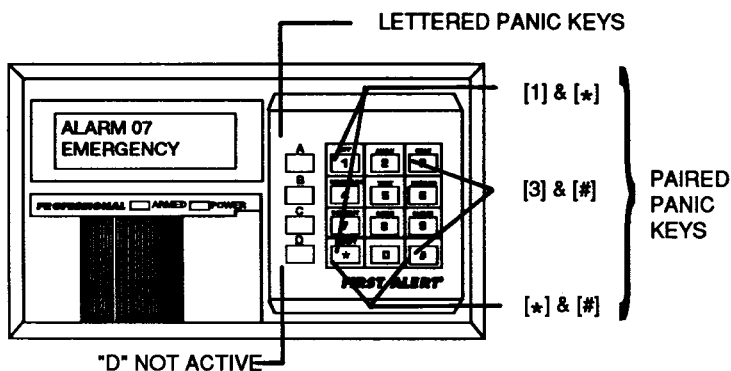
Press an active lettered key *for at least two seconds*.

or

Press both keys of an active pair *at the same time*.

	PANIC KEY(S)	PROGRAMMED FUNCTION	ZONE NUMBER
FA310KP & FA510KP Consoles	A		95
	B		07
	C		96
FA200KP Consoles	[1] & [*]		95
	[*] & [#]		07
	[3] & [#]		96

KEY D, if present on your console, is not active here.



• PRESS LETTERED KEY
FOR AT LEAST 2 SECONDS.

• PRESS PAIRED KEYS
BOTH AT SAME TIME.

OUTPUT RELAY OPTIONS

(PROGRAMMABLE ACTIONS IN RESPONSE TO ZONE ACTIVITY OR MANUAL ENTRIES)

If filled in by your installer, the actions indicated below can be started and stopped by the stated conditions programmed at the time of installation:

ACTION	STARTED BY	STOPPED BY

TESTING THE SYSTEM

(TO BE CONDUCTED WEEKLY)

The test mode allows each protection point to be checked for proper operation. A test should be conducted weekly, as follows:

NOTE: No alarm reports will be sent to the central monitoring station when the system is in the test mode.

1. Disarm the system and close all protected windows, doors, etc. The READY message should be displayed on the console.
2. While the READY message is displayed, enter your security code and press the TEST [5] key to enter the test mode. The outside siren or bell will sound for one second. The console will sound a single beep every minute as a reminder that it is in the test mode.
3. Each time a protection zone is faulted, the console should sound 3 beeps and the identification of the zone will appear on the console's display.

4. Open and close each protected door and window in turn and listen for the required sound.
5. Walk in front of any interior motion detectors (if used) and listen for the required sound as movement is detected.

Note: Wireless units will send signals out only if they have been inactive for 3 minutes.

6. Follow the test procedure provided by the manufacturer of each smoke detector to ensure that all detectors are operational and functioning properly.
7. Turn off the test mode by entering your security code and pressing the OFF [1] key.

IF A PROBLEM IS EXPERIENCED WITH ANY PROTECTION POINT (NO CONFIRMING BEEPS OR NO DISPLAY), CALL FOR SERVICE IMMEDIATELY.

TROUBLE CONDITIONS

BATTERY (BAT or LO BAT) Display

A display of BAT or LO BAT with no zone number indicates that the main standby battery in your control is weak. If this condition persists for more than one day (with AC present), call for service.

If the BAT or LO BAT display appears *with* a zone number, it indicates that there are wireless transmitters in your system and the battery in that zone's transmitter is getting low. If the battery is not replaced within 30 days, a CHECK display (see below) may occur.

Note: Some wireless transmitters contain a non-replaceable long-life battery, which requires replacement of the entire unit at the end of battery life (e.g., 5802 Pendent,, and 5802CP Belt Clip Personal Emergency Transmitters and 5803 Wireless Key Transmitters).

CHECK Conditions

A console display of CHECK and a zone number indicates a condition that requires your attention.

If the CHECK display relates to a fire zone, call for service immediately.

If the CHECK display relates to a burglary zone, and is accompanied by rapid beeping from the keypad, a DAY (Trouble)/NIGHT (Alarm) zone has been violated during the disarmed state that should not normally be disturbed. The console can be silenced by pressing any key on the console.

If there are wireless transmitters in your system, the CHECK condition may also be caused by some change in the environment that prevents the receiver from hearing a particular transmitter. Consult your service company if this occurs.

The display will not turn off until the zone is restored by you (or by a service person if the problem cannot be resolved by you). To clear the display after the zones have been restored, enter the OFF sequence (user code + OFF key) twice.

Power Failure Indications

If the POWER indicator is off and NO AC or AC LOSS is displayed, AC power is absent, but the system is operating from its back-up battery.

If the POWER indicator is off and there is no display at all, ALL power is off and the system is inoperative. CALL FOR SERVICE IMMEDIATELY.

Other Displays (Fixed English Consoles)

"dl": If this remains displayed for more than 1 minute, your system is disabled. Call for service immediately.

Note: *If either of the following remain displayed for more than ten minutes, call your service company.*

"CC": System is in communication with the central station for change of function or status verification.

"OC": Console or system is inoperative and sees an "open circuit".

For servicing information,
see back cover.

FIRE ALARM SYSTEM (IF INSTALLED)

Your fire alarm system (if installed) is on 24 hours a day, for continuous protection. In the event of an emergency, the strategically located smoke and heat detectors will automatically send signals to your system, triggering a loud, interrupted sound from the Console. An interrupted sound will also be produced by optional exterior sounders. A FIRE message will appear at your Console and remain on until you silence the alarm.

IN CASE OF FIRE ALARM:

1. Should you become aware of a fire emergency before your detectors sense the problem, go to your nearest Console and manually initiate an alarm by pressing the panic key(s) assigned as FIRE emergency (if programmed by the installer) as indicated on page 14.
2. Evacuate all occupants from the premises.
3. If flames and/or smoke are present, leave the premises and notify your local Fire Department immediately.
4. If no flames or smoke are apparent, investigate the cause of the alarm. The zone descriptor of the zone(s) in an alarm condition will be displayed at the Console.

SILENCING A FIRE ALARM:

1. Silence the alarm by pressing the **OFF** key. To clear the display, enter your code and press the **OFF** key again.
2. If the Console still indicates a zone number after the second OFF sequence, check that smoke detectors are not responding to smoke or heat producing objects in their vicinity. Should this be the case, eliminate the source of heat or smoke.
3. If this does not remedy the problem, there may still be smoke in the detector. Clear it by fanning the detector for about 30 seconds.
4. When the problem has been corrected, clear the display by entering your code and pressing the **OFF** key.

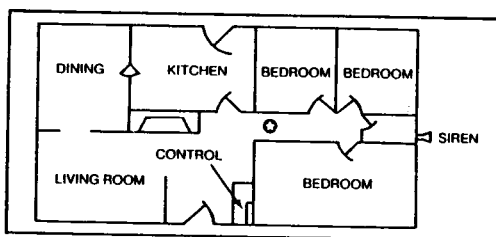
Note: "Approval of the panel's burglar alarm functions does not fall within the California State Fire Marshal's area of jurisdiction."

NATIONAL FIRE PROTECTION ASSOCIATION RECOMMENDATIONS ON SMOKE DETECTORS

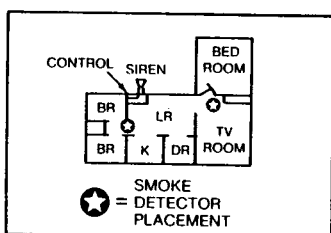
With regard to the number and placement of smoke/heat detectors, we subscribe to the recommendations contained in the National Fire Protection Association's Standard #74 noted below.

Early warning fire detection is best achieved by the installation of fire detection equipment in all rooms and areas of the household as follows: A smoke detector installed outside of each separate sleeping area, in the immediate vicinity of the bedrooms and on each additional story of the family living unit, including basements and excluding crawl spaces and unfinished attics.

In addition, it is recommended that the householder consider the use of heat or smoke detectors in the living room, dining room, bedroom(s), kitchen, hallway(s), attic, furnace room, utility and storage rooms, basements and attached garages.

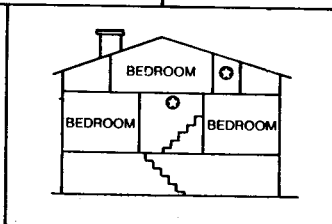


BEST RESIDENTIAL DETECTOR PLACEMENT
BETWEEN BEDROOMS AND REST OF HOUSE



PLACE
DETECTOR
NEAR ALL
SLEEPING
AREAS.

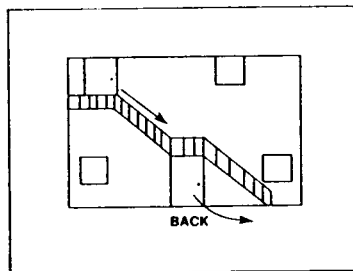
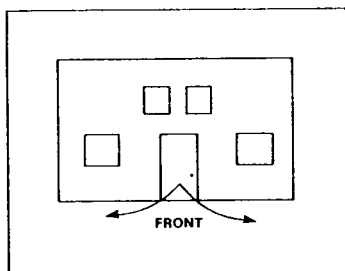
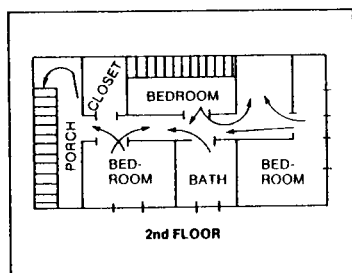
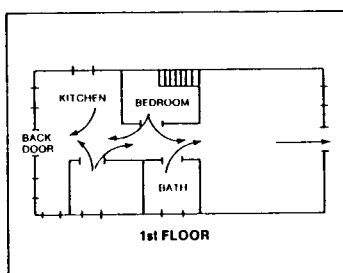
MAXIMUM FLOOR
COVERAGE —
DETECTORS AT
TOP OF
STAIRWELLS.



EMERGENCY EVACUATION

Establish and regularly practice a plan of escape in the event of fire. The following steps are recommended by the National Fire Protection Association:

1. Plan on your detector or your interior and/or exterior sounders warning all occupants.
2. Determine two means of escape from each room. One path of escape should lead to the door that permits normal exit from the building. The other may be a window, should your path be unpassable. Station an escape ladder at such windows if there is a long drop to the ground.
3. Sketch a floor plan of the building. Show windows, doors, stairs, and rooftops that can be used to escape. Indicate escape routes for each room. Keep these routes free from obstruction and post copies of the escape routes in every room.
4. Assure that all bedroom doors are shut while you are asleep. This will prevent deadly smoke from entering while you escape.
5. Try the door. If the door is hot, check your alternate escape route. If the door is cool, open it cautiously. Be prepared to slam the door if smoke or heat rushes in.
6. Crawl in the smoke and hold your breath.
7. Escape quickly; don't panic.
8. Establish a common meeting place outdoors, away from your house, where everyone can meet and then take steps to contact the authorities and account for those missing. Choose someone to assure that nobody returns to the house — many die going back.



SUMMARY OF AUDIBLE NOTIFICATION

(ALPHA DISPLAY CONSOLE)

SOUND	CAUSE	DISPLAY
LOUD, INTERRUPTED* Console & External	FIRE ALARM	FIRE is displayed; descriptor of zone (5) in alarm is displayed.
LOUD, CONTINUOUS* Console & External	BURGLARY/AUDIBLE EMERGENCY ALARM	ALARM is displayed; descriptor of zone in alarm is also displayed.
ONE SHORT BEEP (not repeated) Console only	a. SYSTEM DISARM b. SYSTEM ARMING ATTEMPT WITH AN OPEN ZONE. c. BYPASS VERIFY	a. DISARMED/READY TO ARM is displayed. b. The number and descriptor of the open protection zone is displayed. c. Numbers and descriptors of the bypassed protection zones are displayed (One beep is heard for each zone displayed). Subsequently, the following is displayed: DISARMED BYPASS Ready to Arm
ONE SHORT BEEP (once every 60 seconds) Console only	SYSTEM IS IN TEST MODE	Opened Zone identifications will appear.
ONE BEEP every 60 sec.	LOW BATTERY AT A TRANSMITTER	LO BAT displayed with description of transmitter.
TWO SHORT BEEPS	ARM AWAY OR MAXIMUM	ARMED AWAY or ARMED MAXIMUM is displayed. Red ARMED indicator is lit.
THREE SHORT BEEPS Console only	a. ARM STAY OR INSTANT b. ZONE OPENED WHILE SYSTEM IS IN CHIME OR TEST MODE.	a. ARMED STAY ZONE BYPASSED or ARMED INSTANT ZONE BYPASSED is displayed. Red ARMED indicator is lit. b. CHIME or TEST displayed.
RAPID BEEPING Console only	a. TROUBLE b. AC POWER LOSS ALERT** c. MEMORY OF ALARM	a. CHECK displayed. Descriptor of troubled protection zone is displayed. b. AC LOSS displayed (may alternate with other displays that may be present). c. FIRE or ALARM is displayed; descriptor of zone in alarm is displayed.
SLOW BEEPING Console only	ENTRY DELAY WARNING	DISARM SYSTEM OR ALARM WILL OCCUR is displayed. Exceeding the delay time without disarming causes alarm.

* If bell is used as external sounder, fire alarm is pulsed ring; burglary/audible emergency is steady ring.

** Loss of system battery power is not indicated or annunciated by the console (warnings are for loss of AC power only).

SUMMARY OF AUDIBLE NOTIFICATION (FIXED WORD DISPLAY CONSOLE)

SOUND	CAUSE	DISPLAY
LOUD, INTERRUPTED* Console & External	FIRE ALARM	FIRE and ALARM is displayed; protection zone (5) in alarm is displayed.
LOUD, CONTINUOUS* Console & External	BURGLARY/AUDIBLE EMERGENCY ALARM	ALARM is displayed; protection zone in alarm is also displayed.
ONE SHORT BEEP (not repeated) Console only	a. SYSTEM DISARM b. SYSTEM ARMING ATTEMPT WITH AN OPEN ZONE. c. BYPASS VERIFY	a. Only READY is displayed. b. NOT READY is displayed, open protection zone number is displayed. c. The bypassed protection zone numbers are displayed. (One beep for each number displayed.) BYPASS displayed.
ONE SHORT BEEP (once every 60 seconds) Console only	SYSTEM IS IN TEST MODE	Opened Zone identifications will appear.
ONE BEEP every 60 sec.	LOW BATTERY AT A TRANSMITTER	BAT displayed with ID number of transmitter.
TWO SHORT BEEPS	ARM AWAY OR MAXIMUM	AWAY and (if MAXIMUM) INSTANT are displayed.
THREE SHORT BEEPS Console only	a. ARM STAY OR INSTANT b. ZONE OPENED WHILE SYSTEM IS IN CHIME OR TEST MODE.	a. STAY and (if INSTANT) INSTANT are displayed. b. CHIME or TEST displayed, open protection zone number is displayed..
RAPID BEEPING Console only	a. TROUBLE b. AC POWER LOSS ALERT** c. MEMORY OF ALARM	a. CHECK displayed. Troubled protection zone is displayed. b. NO AC displayed (may alternate with other displays that may be present). c. FIRE and/or ALARM is displayed; zone in alarm is displayed.
SLOW BEEPING Console only	a. ENTRY DELAY WARNING	a. None during delay; Exceeding the delay time without disarming causes alarm.

*If bell is used as external sounder, fire alarm is pulsed ring; burglary/audible emergency is steady ring.

**Loss of system battery power is not indicated or annunciated by the console (warnings are for loss of AC power only).

PROTECTION ZONES LIST

One or more sensing devices will have been assigned by the installer of your alarm system to each of the various protection zones in your system (*although not every zone number can be used*). For example, the sensing device on your Entry/Exit door may have been assigned to zone 01, sensing devices on windows in the master bedroom to zone 02, and so on.

Zone numbers 07, 95 and 96 represent Console Keypad "Panic" alarm functions assigned by the installer (see Page 14). Zone numbers 08 and 09 are reserved for Duress and Tamper signal reporting to the central station.

For your convenience, a chart has been provided which may be used to record the specific zone number assignments for your system. Your installer will assist you in recording this information.

PROTECTION ZONE DESCRIPTIONS

Zone	Description	Zone	Description	Zone	Description
01		23		45	
02		24		46	
03		25		47	
04		26		48	
05		27		49	
06		28		50	
07	KEY B or (* & #) Panic	29		51	
08	-Duress-	30		52	
09	-Tamper-	31		53	
10		32		54	
11		33		55	
12		34		56	
13		35		57	
14		36		58	
15		37		59	
16		38		60	
17		39		61	
18		40		62	
19		41		63	
20		42			
21		43		95	KEY A or(1 & *) Panic
22		44		96	KEY C or(3 & #) Panic

QUICK GUIDE TO ALARM SYSTEM FUNCTIONS

FUNCTION	PROCEDURE	COMMENTS
Check Zones	Press [*].	To view faulted zones when system not ready.
Arm System	Enter code, Press arming key desired: (AWAY, STAY, INSTANT, MAXIMUM)	Arms system in mode selected.
Quick Arm (if programmed)	Press #, Press arming key desired: (AWAY, STAY, INSTANT, MAXIMUM)	Arms system in mode selected, quickly and without use of code.
Bypass Zones	Enter code, Press BYPASS [6], Enter zone numbers to be bypassed (use 2-digit entries).	Bypassed zones are unprotected and will not cause an alarm if violated.
Quick Bypass (if programmed)	Enter code, Press BYPASS [6]	Bypasses all faulted zones automatically, plus (if so-programmed), zones 17, 30, 31, 46, 47 if they are in system.
Silence Sounders Burglary: Fire: "Check":	 Enter code, Press OFF [1]. Press OFF [1] Press any key.	 Also disarms system. Memory of alarm remains until cleared. Memory of Alarm remains until cleared. Determine cause. See Page 16.
Disarm System	Enter code, Press OFF [1].	Also silences sounders. Memory of alarm remains until cleared.
Clear Alarm Memory	After disarming, Enter code again, Press OFF [1] again	Console will beep rapidly upon entry if alarm has occurred. Alarm display will remain upon disarming until cleared.
Duress (if connected to central station)	Arm or disarm "normally", but with 4th digit of code increased by "1".	Performs desired action and sends silent alarm to central station.
Panic Alarms (as programmed)	Press Key [A], [B], or [C] for at least 2 seconds, or (if no A, B, or C on your console), Press keys [1]&[*], or [*]&[#], or [3]&[#], both at same time.	See Page 14 for functions programmed for your system.
Chime Mode	To turn ON or OFF: Enter code. Press CHIME [9].	Console will sound if doors or windows are violated while system disarmed and chime mode is ON.
Test Mode	Enter code, Press TEST [5] To turn OFF: Enter code, Press OFF [1].	Tests alarm sounder and allows sensors to be tested.

Notes

CANADIAN DEPARTMENT OF COMMUNICATIONS (DOC) STATEMENT

NOTICE

The Canadian Department of Communications label identifies certified equipment. This certification means that the equipment meets certain telecommunications network protective, operational and safety requirements. The Department does not guarantee the equipment will operate to the user's satisfaction.

Before installing this equipment, users should ensure that it is permissible to be connected to the facilities of the local telecommunications company. The equipment must also be installed using an acceptable method of connection. In some cases, the company's inside wiring associated with a single line individual service may be extended by means of certified connector assembly (telephone extension cord). The customer should be aware that compliance with the above conditions may not prevent degradation of service in some situations.

Repairs to certified equipment should be made by an authorized Canadian maintenance facility designated by the supplier. Any repairs or alterations made by the user to this equipment, or equipment malfunctions, may give the telecommunications company cause to request the user to disconnect the equipment.

Users should ensure for their own protection that the electrical ground connections of the power utility, telephone lines and internal metallic water pipe system, if present, are connected together. This precaution may be particularly important in rural areas.

Caution: User should not attempt to make such connections themselves, but should contact the appropriate electric inspection authority, or electrician, as appropriate.

The Load Number (LN) assigned to each terminal device denotes the percentage of the total load to be connected to a telephone loop which is used by the device, to prevent overloading. The termination on a loop may consist of any combination of devices subject only to the requirement that the total of the Load Numbers of all the devices does not exceed 100.

AVIS

L'étiquette du ministère des Communications du Canada identifie le matériel homologué. Cette étiquette certifie que le matériel est conforme à certaines normes de protection, d'exploitation et de sécurité des réseaux de télécommunications. Le ministère n'assure toutefois pas que le matériel fonctionnera à la satisfaction de l'utilisateur.

Avant d'installer ce matériel, l'utilisateur doit s'assurer qu'il est permis de le raccorder aux installations de l'entreprise locale de télécommunication. Le matériel doit également être installé en suivant une méthode acceptée de raccordement. Dans certains cas, les fils intérieurs de l'entreprise utilisés pour un service individuel a ligne unique peuvent être prolongés au moyen d'un dispositif homologué de raccordement (cordon prolongateur téléphonique interne). L'abonné ne doit pas oublier qu'il est possible que la conformité aux conditions énoncées ci-dessus n'empêchent pas la dégradation du service par certaines situations. Actuellement, les entreprises de télécommunication ne permettent pas que l'on raccorde leur matériel aux jacks d'abonnés, sauf dans les cas précis prévus par les tarifs particuliers de ces entreprises.

Les réparations de matériel homologué doivent être effectuées par un centre d'entretien canadien autorisé désigné par le fournisseur. La compagnie de télécommunications peut demander à l'utilisateur de débrancher un appareil à la suite de réparations ou de modifications effectuées par l'utilisateur ou à cause de mauvais fonctionnement.

Pour sa propre protection, l'utilisateur doit s'assurer que tous les fils de mise à la terre de la source d'énergie électrique, des lignes téléphoniques et des canalisations d'eau métalliques, s'il y en a, sont raccordés ensemble. Cette précaution est particulièrement importante dans les régions rurales.

Avertissement: L'utilisateur ne doit pas tenter de faire ces raccordements lui-même; il doit avoir recours à un service d'inspection des installations électriques, ou à un électricien, selon le cas.

L'indice de charge (IC) assigné à chaque dispositif terminal pour éviter toute surcharge indique le pourcentage de la charge totale qui peut être raccordée à un circuit téléphonique bouclé utilisé par ce dispositif. La terminaison du circuit bouclé peut être constituée de n'importe quelle combinaison de dispositifs, pourvu que la somme des indices de charge de l'ensemble des dispositifs ne dépasse pas 100.

WARNING

THE LIMITATIONS OF THIS ALARM SYSTEM

While this System is an advanced design security system, it does not offer guaranteed protection against burglary, fire or other emergency. Any alarm system, whether commercial or residential, is subject to compromise or failure to warn for a variety of reasons. For example:

- Intruders may gain access through unprotected openings or have the technical sophistication to bypass an alarm sensor or disconnect an alarm warning device.
- Intrusion detectors (e.g., passive infrared detectors), smoke detectors, and many other sensing devices will not work without power. Battery-operated devices will not work without batteries, with dead batteries, or if the batteries are not put in properly. Devices powered solely by AC will not work if their AC power supply is cut off for any reason, however briefly.
- Signals sent by wireless transmitters may be blocked or reflected by metal before they reach the alarm receiver. Even if the signal path has been recently checked during a weekly test, blockage can occur if a metal object is moved into the path.
- A user may not be able to reach a panic or emergency button quickly enough.
- While smoke detectors have played a key role in reducing residential fire deaths in the United States, they may not activate or provide early warning for a variety of reasons in as many as 35% of all fires, according to data published by the Federal Emergency Management Agency. Some of the reasons smoke detectors used in conjunction with this System may not work are as follows. Smoke detectors may have been improperly installed and positioned. Smoke detectors may not sense fires that start where smoke cannot reach the detectors, such as in chimneys, in walls, or roofs, or on the other side of closed doors. Smoke detectors also may not sense a fire on another level of a residence or building. A second floor detector, for example, may not sense a first floor or basement fire. Finally, smoke detectors have sensing limitations. No smoke detector can sense every kind of fire every time. In general, detectors may not always warn about fires caused by carelessness and safety hazards like smoking in bed, violent explosions, escaping gas, improper storage of flammable materials, overloaded electrical circuits, children playing with matches, or arson. Depending on the nature of the fire and/or location of the smoke detectors, the detector, even if it operates as anticipated, may not provide sufficient warning to allow all occupants to escape in time to prevent injury or death.
- Passive Infrared Motion Detectors can only detect intrusion within the designed ranges as diagrammed in their installation manual. Passive Infrared Detectors do not provide volumetric area protection. They do create multiple beams of protection, and intrusion can only be detected in unobstructed areas covered by those beams. They cannot detect motion or intrusion that takes place behind walls, ceilings, floors, closed doors, glass partitions, glass doors, or windows.

(continued)

OWNER'S INSURANCE PREMIUM CREDIT REQUEST

This form should be completed and forwarded to your homeowner's insurance carrier for possible premium credit.

A. GENERAL INFORMATION:

Insured's Name and Address: _____

Insurance Company: _____ Policy No.: _____

First Alert's FA150C

Type of Alarm: ☐ Burglary ☐ Fire ☐ Both

Installed by: _____
name address

Serviced by: _____
name address

B. NOTIFIES (Insert B=Burglary, F=Fire)

Local Sounding Device ☐ Police Dept. ☐ Fire Dept. ☐

Central Station ☐ Name and Address: _____

C. POWERED BY: A.C., with Rechargeable Power Supply

D. TESTING: ☐ Quarterly ☐ Monthly ☐ Weekly ☐ Other _____

E. SMOKE DETECTOR LOCATIONS

☐ Furnace Room ☐ Kitchen ☐ Bedrooms ☐ Attic
☐ Basement ☐ Living Room ☐ Dining Room ☐ Hall

F. BURGLARY DETECTING DEVICE LOCATIONS:

☐ Front Door ☐ Basement Door ☐ Rear Door ☐ All Exterior Doors
☐ 1st Floor Windows ☐ All windows ☐ Interior Locations
☐ All Accessible Openings, Including Skylights, Air Conditioners and Vents

G. ADDITIONAL PERTINENT INFORMATION:

Signature: _____ Date: _____



**Complete the front of this form,
detach form from manual,
and forward to your homeowner's insurance carrier
for possible premium credit.**

ONE YEAR LIMITED WARRANTY

Pittway Corporation, and its divisions, subsidiaries and affiliates ("Seller"), 165 Eileen Way, Syosset, New York 11791, warrants its First Alert security equipment (the "product") to be free from defects in materials and workmanship for one year from date of original purchase, under normal use and service. Seller's obligation is limited to repairing or replacing, at its option, free of charge for parts, labor, or transportation, any product proven to be defective in materials or workmanship under normal use and service. Seller shall have no obligation under this warranty or otherwise if the product is altered or improperly repaired or serviced by anyone other than the Seller. In case of defect, contact the security professional who installed and maintains your security equipment or the Seller for product repair.

This one year Limited Warranty is in lieu of all other express warranties, obligations or liabilities. THERE ARE NO EXPRESS WARRANTIES, WHICH EXTEND BEYOND THE FACE HEREOF. ANY IMPLIED WARRANTIES, OBLIGATIONS OR LIABILITIES MADE BY SELLER IN CONNECTION WITH THIS PRODUCT, INCLUDING ANY IMPLIED WARRANTY OF MERCHANTABILITY, OR FITNESS FOR A PARTICULAR PURPOSE OR OTHERWISE, ARE LIMITED IN DURATION TO A PERIOD OF ONE YEAR FROM THE DATE OF ORIGINAL PURCHASE. ANY ACTION FOR BREACH OF ANY WARRANTY, INCLUDING BUT NOT LIMITED TO ANY IMPLIED WARRANTY OF MERCHANTABILITY, MUST BE BROUGHT WITHIN 12 MONTHS FROM DATE OF ORIGINAL PURCHASE. IN NO CASE SHALL SELLER BE LIABLE TO ANYONE FOR ANY CONSEQUENTIAL OR INCIDENTAL DAMAGES FOR BREACH OF THIS OR ANY OTHER WARRANTY, EXPRESS OR IMPLIED, OR UPON ANY OTHER BASIS OF LIABILITY WHATSOEVER, EVEN IF THE LOSS OR DAMAGE IS CAUSED BY THE SELLER'S OWN NEGLIGENCE OR FAULT. Some states do not allow limitation on how long an implied warranty lasts or the exclusion or limitation of incidental or consequential damages, so the above limitation or exclusion may not apply to you.

Seller does not represent that the product may not be compromised or circumvented; that the product will prevent any personal injury or property loss by burglary, robbery, fire or otherwise; or that the product will in all cases provide adequate warning or protection. Buyer understands that a properly installed and maintained alarm may only reduce the risk of a burglary, robbery, fire or other events occurring without providing an alarm, but it is not insurance or a guarantee that such will not occur or that there will be no personal injury or property loss as a result. CONSEQUENTLY, SELLER SHALL HAVE NO LIABILITY FOR ANY PERSONAL INJURY, PROPERTY DAMAGE OR OTHER LOSS BASED ON A CLAIM THE PRODUCT FAILED TO GIVE WARNING. HOWEVER, IF SELLER IS HELD LIABLE, WHETHER DIRECTLY OR INDIRECTLY, FOR ANY LOSS OR DAMAGE ARISING UNDER THIS LIMITED WARRANTY OR OTHERWISE, REGARDLESS OF CAUSE OR ORIGIN, SELLER'S MAXIMUM LIABILITY SHALL NOT IN ANY CASE EXCEED THE PURCHASE PRICE OF THE PRODUCT, WHICH SHALL BE THE COMPLETE AND EXCLUSIVE REMEDY AGAINST SELLER. This warranty gives you specific legal rights, and you may also have other rights which vary from state to state. No increase or alteration, written or verbal, to this warranty is authorized.

SERVICING INFORMATION

Your local local authorized service representative is the person best qualified to service your alarm system, Arranging some kind of regular service program with him is advisable.

Your local service representative is:

PHONE: _____



N6618-1 12/92

**172 Michael Drive
Syosset, New York 11791**

COPYRIGHT © 1992 PITTMAY CORPORATION